

두께계 모니터링 구축 (HMI)



두께계의 영향 인자 및 핵심 인자의 상태 정보 수집과 분석 알고리즘을 개발하여, 두께 계측기에 대한 모니터링 강화 및 중요 설비의 조기 안정화를 위한 HMI 모니터링 구축으로 생산제품 품질을 확보한다.

품명 : 두께계 Monitoring HMI Software Program

품목 Code : **PMHMI-APP-SWMON-100**

두께계 모니터링 구축

2021-03-23 16:55:23

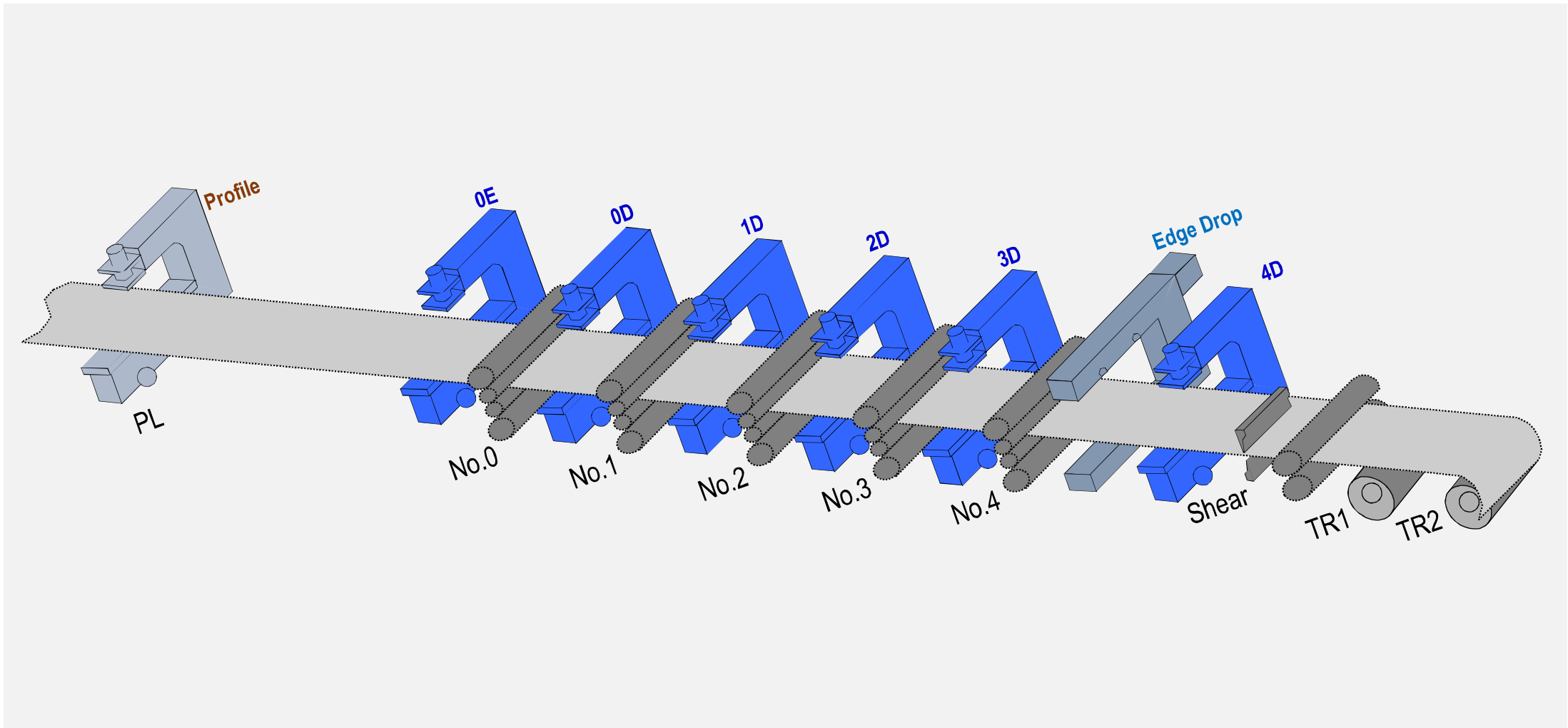
Comm' Status ●

Thick Quality Monitoring

CRT No. : 001



Message #3D Thickness Ethercat Fault !!!



Comm' & Device Status	Thick Quality Monitoring	Stand-by & Fool Proof	Thickness Monitoring							Trend Management	Alarm Management	Maintenance & Prediction
			0E	0D	1D	2D	3D	Edge Drop	4D			

Communication & Device Status

CRT No. : 002

Home

Message 0E Thickness MC Server Fault !!



MC Server

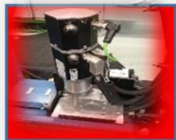
Machine	Output Voltage[v]	CZ	CS
0E			
0D			
1D			
2D			
3D			
Edge Drop			
4D			



XRG



MT04



Motor



C-Frame



Value Stand



Water Chiller



I/O etc.

【Communication】

Machine	Thickness ~ PLC	Thickness ~ PosMaster	Ethercat
0E	OK	OK	OK
0D	OK	OK	OK
1D	OK	OK	OK
2D	OK	OK	●
3D	OK	OK	OK
Edge Drop	OK	OK	OK
4D	OK	OK	OK

【Device】

Machine	XRG	MT04	Motor	Water Chiller
0E	OK	OK	OK	OK
0D	OK	OK	OK	OK
1D	OK	OK	OK	OK
2D	OK	OK	●	OK
3D	OK	OK	OK	OK
Edge Drop	OK	OK	OK	OK
4D	OK	OK	OK	OK

Stand-by & Fool Proof

CRT No. : 004

Home

【0E】

Item	Value
Gauge Status	DWORD
Fault Status	DWORD
Warning Status	DWORD
C-Frame Position (Measuring/Park)	23.45
	램프
X-Ray Status	HV
Shutter Status	램프
Sample Position Status	램프
Air Pressure	67.89
Water Flow	12.34
Water Temperature	56.78
PLC I/O	
Spare	

【0D】

Item	Value
Gauge Status	DWORD
Fault Status	DWORD
Warning Status	DWORD
C-Frame Position (Measuring/Park)	23.45
	램프
X-Ray Status	HV
Shutter Status	램프
Sample Position Status	램프
Air Pressure	67.89
Water Flow	12.34
Water Temperature	56.78
PLC I/O	
Spare	

【1D】

Item	Value
Gauge Status	DWORD
Fault Status	DWORD
Warning Status	DWORD
C-Frame Position (Measuring/Park)	23.45
	램프
X-Ray Status	HV
Shutter Status	램프
Sample Position Status	램프
Air Pressure	67.89
Water Flow	12.34
Water Temperature	56.78
PLC I/O	
Spare	

【2D】

Item	Value
Gauge Status	DWORD
Fault Status	DWORD
Warning Status	DWORD
C-Frame Position (Measuring/Park)	23.45
	램프
X-Ray Status	HV
Shutter Status	램프
Sample Position Status	램프
Air Pressure	67.89
Water Flow	12.34
Water Temperature	56.78
PLC I/O	
Spare	

【3D】

Item	Value
Gauge Status	DWORD
Fault Status	DWORD
Warning Status	DWORD
C-Frame Position (Measuring/Park)	23.45
	램프
X-Ray Status	HV
Shutter Status	램프
Sample Position Status	램프
Air Pressure	67.89
Water Flow	12.34
Water Temperature	56.78
PLC I/O	
Spare	

【Edge Drop】

Item	Value
Gauge Status	DWORD
Fault Status	DWORD
Warning Status	DWORD
C-Frame Position (Measuring/Park)	23.45
	램프
X-Ray Status	HV
Shutter Status	램프
Sample Position Status	램프
Air Pressure	67.89
Water Flow	12.34
Water Temperature	56.78
PLC I/O	
Spare	

【4D】

Item	Value
Gauge Status	DWORD
Fault Status	DWORD
Warning Status	DWORD
C-Frame Position (Measuring/Park)	23.45
	램프
X-Ray Status	HV
Shutter Status	램프
Sample Position Status	램프
Air Pressure	67.89
Water Flow	12.34
Water Temperature	56.78
PLC I/O	
Spare	

【Spare】

Item	Value
Gauge Status	DWORD
Fault Status	DWORD
Warning Status	DWORD
C-Frame Position (Measuring/Park)	23.45
	램프
X-Ray Status	HV
Shutter Status	램프
Sample Position Status	램프
Air Pressure	67.89
Water Flow	12.34
Water Temperature	56.78
PLC I/O	
Spare	

Thickness(1D) Monitoring

CRT No. : 007

Home

【MC Server】

Item	Value
Device Status	OK
Gauge Status	OK
PLC I/O	
Socket Status (PLC)	
Output Voltage	
CZ	
CS	

【XRG】

Item	Value
Device Status	Fault
Actual Tube HV	
Actual Tube Current	
Controller Temp'	
Pitch Count	

【MT04】

Item	Value
Device Status	OK
Controller Temp'	
HV Feedback	
Status Changed	

【Motor】

Item	Value
Device Status	OK
Actual Current	
Motor Temp'	

【C-Frame】

Item	Value
Device Status	OK
Inside Humidity	
Temperature	

【Value Stand】

Item	Value
Device Status	OK
Air Pressure (Control/Purge)	
Water Flow	
Water Temperature	

【Water Chiller】

Item	Value
Device Status	OK
Status (Run/Stop)	
Error Code	
Command	

【I/O etc.】

Item	Value
Device Status	OK

Thickness(3D) Monitoring

CRT No. : 009

Home

【MC Server】

Item	Value
Device Status	OK
Gauge Status	OK
PLC I/O	
Socket Status (PLC)	
Output Voltage	
CZ	
CS	

【XRG】

Item	Value
Device Status	Fault
Actual Tube HV	
Actual Tube Current	
Controller Temp'	
Pitch Count	

【MT04】

Item	Value
Device Status	OK
Controller Temp'	
HV Feedback	
Status Changed	

【Motor】

Item	Value
Device Status	OK
Actual Current	
Motor Temp'	

【C-Frame】

Item	Value
Device Status	OK
Inside Humidity	
Temperature	

【Value Stand】

Item	Value
Device Status	OK
Air Pressure (Control/Purge)	
Water Flow	
Water Temperature	

【Water Chiller】

Item	Value
Device Status	OK
Status (Run/Stop)	
Error Code	
Command	

【I/O etc.】

Item	Value
Device Status	OK

Trend Management (Live)

CRT No. : 012

Historical

Home

Message #3D Thickness Ethercat Fault !!!

[Live Data]

Selection

Selection	Item Group	Data	Machine	Graph Type
L_TE_01	Temperature	Temperature Coolant Return	All	
L_TE_02	Temperature	MT04 Temperature	All	
L_TE_03	Temperature	C-Frame Temperature	All	
L_TE_04	Temperature	Local Panel Temperature	All	
L_TE_05	Temperature	Main Panel Temperature	All	
L_TE_06	Temperature	Motor Temperature	All	
L_TE_07	Temperature	Controller Value Temp[0]	All	
L_TE_08	Temperature	Controller Value Temp[0]	Edge Drop	
L_TE_09	Temperature	Controller Value Temp[0]	Edge Drop	14
L_TE_ALL	Temperature	All Temperature Data	All	15
L_HU_01	Humidity	C-Frame Humidity	All	
L_VI_01	Vibration	C-Frame Vibration	All	
L_VI_02	Vibration	Water Chiller Vibration	All	16
L_VI_ALL	Vibration	All Vibration Data	All	17
L_PR_01	Pressure	Compressed Air OP'	All	
L_PR_02	Pressure	Compressed Air Blow Off	All	18
L_PR_ALL	Pressure	All Pressure Data	All	19
L_FL_01	Flow Rate	Coolant Flow	All	
L_XR_01	XRG	Pitch Count (Center)	All	
L_XR_02	XRG	Pitch Count (W/S)	Edge Drop	
L_XR_03	XRG	Pitch Count (D/S)	Edge Drop	20
L_XR_ALL	XRG	All XRG Pitch Data	All	21

Selection	Item Group	Data	Machine	Graph Type
L_VC_01	Voltage/Current	X-ray Actual Tube HV	All	
L_VC_02	Voltage/Current	X-ray Actual Tube Current	All	
L_VC_03	Voltage/Current	HV Feedback	All	
L_VC_04	Voltage/Current	Actual Phase Current	All	
L_VC_05	Voltage/Current	X-ray Actual Tube HV (W/S)	Edge Drop	
L_VC_06	Voltage/Current	X-ray Actual Tube Cur' (W/S)	Edge Drop	
L_VC_07	Voltage/Current	HV Feedback (W/S)	Edge Drop	
L_VC_08	Voltage/Current	Actual Phase Current (W/S)	Edge Drop	
L_VC_09	Voltage/Current	X-ray Actual Tube HV (D/S)	Edge Drop	
L_VC_10	Voltage/Current	X-ray Actual Tube Cur' (D/S)	Edge Drop	
L_VC_11	Voltage/Current	HV Feedback (D/S)	Edge Drop	
L_VC_12	Voltage/Current	Actual Phase Current (D/S)	Edge Drop	22
L_VC_ALL	Voltage/Current	All Voltage/Current Data	All	23
L_CA_01	Calibration	CZ1	All	
L_CA_01	Calibration	CZ2	All	
L_CA_01	Calibration	CS1	All	
L_CA_01	Calibration	CS2	All	
L_CA_01	Calibration	Preabsorber1	All	
L_CA_01	Calibration	Preabsorber1	All	24
L_CA_ALL	Calibration	All Calibration Data	All	25

Trend Management (Historical)

CRT No. : 013

Live

Home

Message #3D Thickness Ethercat Fault !!!

【Historical Data】

Selection

Selection	Item Group	Data	Machine	Graph Type
L_TE_01	Temperature	Temperature Coolant Return	All	
L_TE_02	Temperature	MT04 Temperature	All	
L_TE_03	Temperature	C-Frame Temperature	All	
L_TE_04	Temperature	Local Panel Temperature	All	
L_TE_05	Temperature	Main Panel Temperature	All	
L_TE_06	Temperature	Motor Temperature	All	
L_TE_07	Temperature	Controller Value Temp[0]	All	
L_TE_08	Temperature	Controller Value Temp[0]	Edge Drop	
L_TE_09	Temperature	Controller Value Temp[0]	Edge Drop	26
L_TE_ALL	Temperature	All Temperature Data	All	27
L_HU_01	Humidity	C-Frame Humidity	All	
L_VI_01	Vibration	C-Frame Vibration	All	
L_VI_02	Vibration	Water Chiller Vibration	All	28
L_VI_ALL	Vibration	All Vibration Data	All	29
L_PR_01	Pressure	Compressed Air OP'	All	
L_PR_02	Pressure	Compressed Air Blow Off	All	30
L_PR_ALL	Pressure	All Pressure Data	All	31
L_FL_01	Flow Rate	Coolant Flow	All	
L_XR_01	XRG	Pitch Count (Center)	All	
L_XR_02	XRG	Pitch Count (W/S)	Edge Drop	
L_XR_03	XRG	Pitch Count (D/S)	Edge Drop	32
L_XR_ALL	XRG	All XRG Pitch Data	All	33

Selection	Item Group	Data	Machine	Graph Type
L_VC_01	Voltage/Current	X-ray Actual Tube HV	All	
L_VC_02	Voltage/Current	X-ray Actual Tube Current	All	
L_VC_03	Voltage/Current	HV Feedback	All	
L_VC_04	Voltage/Current	Actual Phase Current	All	
L_VC_05	Voltage/Current	X-ray Actual Tube HV (W/S)	Edge Drop	
L_VC_06	Voltage/Current	X-ray Actual Tube Cur' (W/S)	Edge Drop	
L_VC_07	Voltage/Current	HV Feedback (W/S)	Edge Drop	
L_VC_08	Voltage/Current	Actual Phase Current (W/S)	Edge Drop	
L_VC_09	Voltage/Current	X-ray Actual Tube HV (D/S)	Edge Drop	
L_VC_10	Voltage/Current	X-ray Actual Tube Cur' (D/S)	Edge Drop	
L_VC_11	Voltage/Current	HV Feedback (D/S)	Edge Drop	
L_VC_12	Voltage/Current	Actual Phase Current (D/S)	Edge Drop	34
L_VC_ALL	Voltage/Current	All Voltage/Current Data	All	35
L_CA_01	Calibration	CZ1	All	
L_CA_01	Calibration	CZ2	All	
L_CA_01	Calibration	CS1	All	
L_CA_01	Calibration	CS2	All	
L_CA_01	Calibration	Preabsorber1	All	
L_CA_01	Calibration	Preabsorber1	All	36
L_CA_ALL	Calibration	All Calibration Data	All	37

두께계 모니터링 구축

Temperature Coolant Return

CRT No. : 014

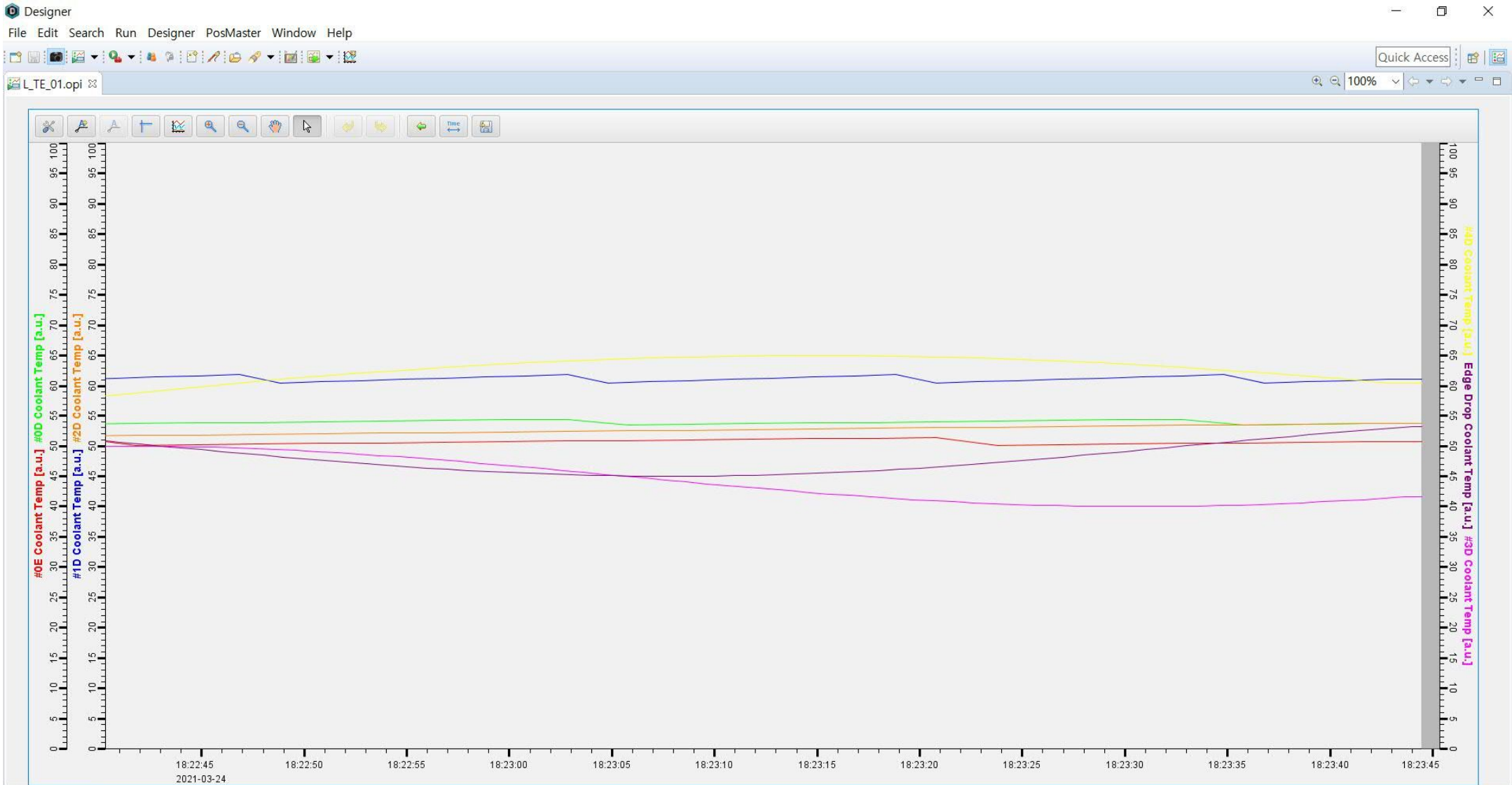
Message #3D Thickness Ethercat Fault !!!

Live

Trend Mgt.

Historical

Home



두께계 모니터링 구축

Temperature Coolant Return Historical

CRT No. : 026

Message #3D Thickness Ethercat Fault !!!

Trend Mgt.

Live

Home

Start Time 2021-01-01 12:00:30

End Time 2021-01-03 15:00:00

Designer
File Edit Search Run Designer PosMaster Window Help

LTE_01.opi

Quick Access

